

Since 1949



CNEWA-Pontifical Mission, Jerusalem
a papal agency for Middle East relief and development

Annual Report 2021





His Excellency, Arch. Adolfo Tito Yllana
Apostolic Delegate in Jerusalem
visit to the Pontifical Mission Office

CNEWA-Pontifical Mission

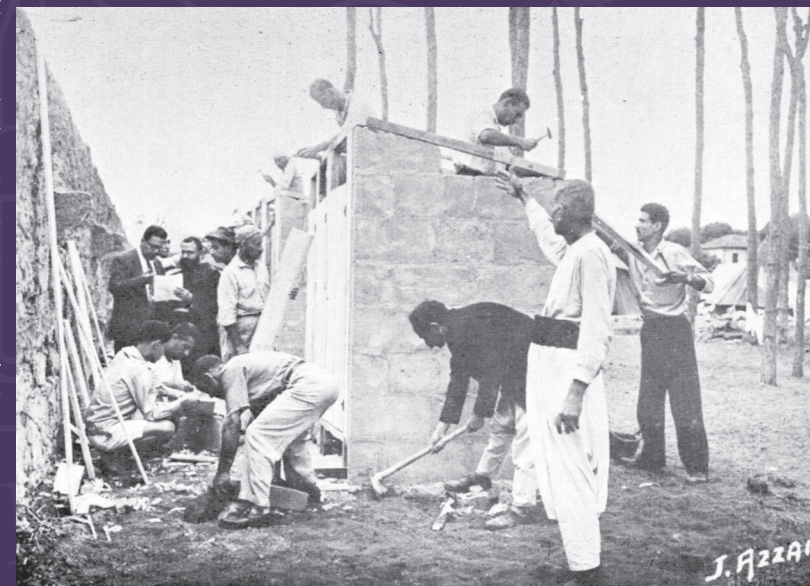
establishment and work today

It was the beginning of the Arab-Israeli conflict in 1948 which created one of the largest displacement of peoples in the world. Pope Pius XII launched the Pontifical Mission for Palestine (PMP) to care for the hundreds of thousands of Palestinian homeless — many of them Christian. He asked Catholic Near East Welfare Association (CNEWA) to take on this special initiative, appointing the head of CNEWA as its president, and charging it with coordinating worldwide Catholic aid.

Pius' successors have continued to support this work, expanding the mandate of Pontifical Mission to assist all peoples in need throughout the Middle East. PMP began implementing humanitarian and development programs and projects through three regional offices in Beirut, Jerusalem, and Amman. After the 1967 war and the occupation of the West Bank and East Jerusalem, with the blessing of Pope Paul VI, PMP began supporting a network of community-based organizations (CBOs) and Church-affiliated institutions throughout the Holy Land.

Today, PMP works for, through and with the local Churches, allocating donor funds for programs and projects that support the Church institutions and community leaders in Palestine and Israel. The Amman Regional Office oversees projects in Jordan and Iraq while the Beirut Regional Office oversees projects in Lebanon, Syria, and Egypt.

Providing work for the refugees to help them earn their living with dignity, 1950



Annual Report 2021

Table of Contents

Forward	4
Country Brief.....	6
2021 Program Review	8
Emergency Aid & Relief	10
Studies & Surveys	14
Enhance and improve access to better public facilities	16
Pastoral Program.....	28
Subsidized Institutions.....	34
Donors & Benefactors.....	40

His Excellency,
Archbishop Adolfo Tito Yllana,
Apostolic Delegate
to Palestine and Jerusalem
visits with the Jerusalem Office
Director & staff

Forward

Toward the third quarter of the year, Israel began to relax the strict COVID measures because the vaccinations appeared to make a significant difference in preventing infection and reducing the symptoms of infection. Indeed, a couple of partner donors were able to visit, which was both uplifting and encouraging. However, before the end of the year, a new variant of COVID was discovered, forcing the country to go yet into another lockdown. We are grateful that the Omicron turned out to be a milder strain, hastening the removal of quarantine measures.

During Ramadan, extreme and unprecedented events occurred in Jerusalem. The Israeli attacks on worshipers at the Al-Aqsa Mosque turned the streets of the Old City, particularly the Damascus Gate, into daily battlegrounds. The march with Israeli flags only exacerbated the situation, and eventually the Palestinian resistance from Gaza reacted to the harassment of worshipers at the Mosque by firing rockets into Jerusalem, resulting in a fierce attack on Gaza, where the road infrastructure and several housing tower buildings were destroyed, as well as collateral damage to a large number of institutions and homes.

The Christian community faced harassment, particularly on Orthodox Holy Saturday at the Church of the Holy Sepulcher. Since 2014, Israeli police have been erecting roadblocks around the Church of the Holy Sepulcher, preventing local Christians and pilgrims from reaching the Church for the Holy Fire ceremony, Jerusalem's most important Christian feast, which is well attended and followed by Christians from all over the Middle East. Pilgrims, particularly from Egypt and neighboring Orthodox countries, traveled to Jerusalem specifically to take part in this special celebration. These actions constitute a violation of the right to freedom of worship.

Within the Arab cities and towns in Israel, crime has become a plague harvesting the lives of young people on a daily basis without any prospect for a solution. The availability of weapons, the lack of education, the spread of drugs as well as the discrimination against the Arab population in Israel are some of the reasons behind this violence.

Partnering with local institutions that are deeply rooted in their respective environment, and conducting community surveys and assessment studies are key to developing appropriate programs that could improve the situation on the ground. However, finding a just solution and ending the occupation, remain the only way to the suffering in Palestine and Israel.

As COVID continued to affect populations around the world, it had an impact on funding resources and donations. However, PMP was able to continue providing services to local communities and respond to some of the emergencies that arose as a result of the war in Gaza. We want to express our gratitude and appreciation to all of our partner donors who continue to support our mission and the Palestinian people in Israel and Palestine.

Joseph Hazboun
Regional Director



Country Brief *Palestine*

Daily military raids and incursions into East Jerusalem neighborhoods and areas in the West Bank, in addition to youth arrests, home demolition and land confiscation, continue unabated. The military presence throughout these areas as well as the 593 roadblocks and checkpoints throughout the West Bank, obstructing access for Palestinians and affecting all aspects of livelihood.

The settler population has increased in East Jerusalem and the West Bank; there are approximately 220,000 Israeli settlers living in East Jerusalem while the settler population in the West Bank is approximately 441,600. There is an estimated 3.2 million Palestinians living in the West Bank and East Jerusalem. The situation is desperate for Palestinians — 36% of Palestinian households in the West Bank, including East Jerusalem, are living below the poverty line.

Following the Covid-19 pandemic, Gaza's socioeconomic crisis is currently at breaking point; Gaza's economy continues to deteriorate with high unemployment and limited job opportunities for young people in addition to serious environmental issues and access restrictions at border crossings, has put Gaza on the trajectory of becoming unlivable. Out of Gaza's population of 2 million, 64% are in poverty.

Focusing on reducing overall living costs is required while maintaining essential health/medical, social, and educational services for the community is needed. Israel's control over Area C and natural resources has increased the demand on house renovations and expansion, which can help solve the housing crisis that is emerging for the new generation. Also, unemployment and poverty are also on the rise whereby more sustainable methods of reducing overall living costs is required; the rehabilitation of water cisterns as well as home gardening/hydroponic systems are simple, inexpensive solutions that can help families and young people meet their living needs.

There are several concerns regarding the Christian community in the West Bank; there are around 50,000 Christians in the West Bank, East Jerusalem, and Gaza Strip. Frequent violation and attacks on Christian land and property continues. Emigration of Christian families is still a threat to the overall Christian presence in Palestine. Christian-based organizations are experiencing more financial problems. There continues to be a strong dependency on donor funding to maintain facilities and equipment as well as income generating initiatives that could cover the running costs.

Background: Har Gilo settlement expansion in the Cremisan Valley

Country Brief *Israel*

Israel's population increased to 9.4 million in 2021, according to the Central Bureau of Statistics (CBS). There are currently 6.9 million Jews, accounting for 73.9% of the population, and 1.955 million Arabs in Israel, which make up 21% of the population and 472,000 others (5.0%). Economic inequality between the Arab and Jewish populations in Israel has increased as a result of the pandemic. There is real concern that many Arab households will continue to be pushed into poverty, and that many workers will remain unemployed.

A change in the political governing body has led to further alienation of the Arab community in Israel. Demonstrations protesting Israeli evictions, police raids in Arab villages and towns in and arrests of hundreds of men and youth has led to some of the worst communal violence between Arabs and Jews in decades. Organized crime also rose in the past two years and the community has witnessed a surge in the number of murders (there have been a total of 98 murders between October 2020-March 2022). The Israeli government's long-standing neglect of Arab Israeli communities across Israel coupled with a deeply rooted identity crisis in the population itself, have allowed organized crime and street violence to ensue.

Issues of identity play an important role in the lives of the Christian community in Israel — a tiny minority group amongst a significant Jewish, Muslim, and Druze population. For this small minority group, there have been anti-Arab, anti-Christian attacks, plots, and violations against it which has been viewed as “unprecedented” and particularly worrying. Israel has reportedly closed 9 out of 10 investigations into anti-Arab religious hate crime cases between 2018 and 2020 on account of not being able to locate the perpetrators. The cases entailed the vandalizing of at least 10 mosques and churches in both the West Bank and within Israel. There have been reports of other isolated incidents in the past two years.

More attention needs to be given to the Arab community in Israel, especially in the form of leadership training and improving the relationship between Christian and Muslim youth that can foster cohesion within the community and help protect the Christian presence.

2021 Program Review

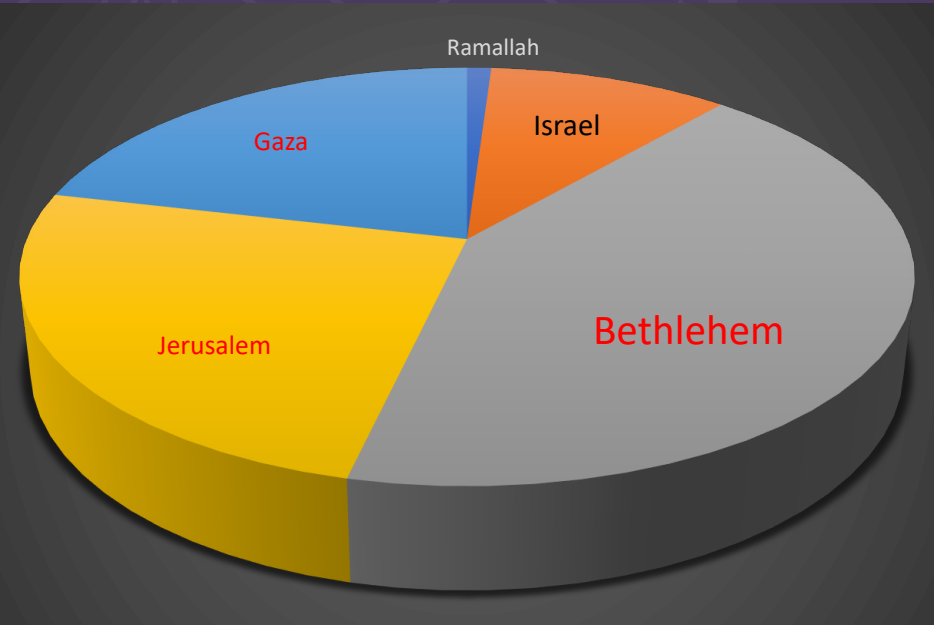
The outbreak of the Covid-19 virus that has swept across the globe, had a significant impact on the populations in Israel and Palestine. Local lockdowns and a shuttered tourist industry for over two years increased unemployment and plunged numerous households into abject poverty.

There is an estimated 3.2 million Palestinians living in the West Bank and East Jerusalem. The situation is desperate for Palestinians — 36% of Palestinian households are living below the poverty line. Out of a population of over 2 million people in the Gaza Strip; half of the workforce is unemployed and nearly seven out of ten people are poor and food insecure. The Gaza war in May 2021 further entrenched the desperation of the Gaza people. According to human rights group study, the war inflicted direct and indirect losses of more than half a billion dollars on various sectors, which deepened an economic crisis and led to a loss of human life.

In 2021, PMP’s donors pledged USD 2.07 million; most of the grants funded the rehabilitation of facilities of local CBOs and pastoral programs. Rehabilitation has enhanced local CBOs ability to deliver vital health, education, and social services for the greater population.

Preparing young leadership is a priority, especially for the sustainability of the hundreds of institutions serving the Palestinian community. Investing in the scout movement, youth activities programs and youth centers, and providing scholarships are key to fostering young leaders within the community.

Pastoral programs also



provided the opportunity to strengthen the Christian presence in the Holy Land, the land of Jesus and where the Christian message of peace and justice is present. This program funded Bible competitions, Bible summer camps in Israel and Palestine and supported youth-led ministries in East Jerusalem, the West Bank and Gaza Strip. The program also supported school catechism classes, school-led visits of Muslim and Christian students to holy sites and various interfaith activities through local partners.

PMP also raised donor funds towards emergency relief for Gaza during and after the war in May 2021 which helped resume local services and provided food, healthcare, and other emergency support for those affected by the war. The program also rehabilitated homes that were damaged and deemed unlivable. It also provided support for other institutions in need as the COVID 19 pandemic affected operations and service delivery.



Emergency Aid and Relief – COVID 19

In emergency crisis, Pontifical Mission works alongside local partners to assess the immediate needs of the local communities, prioritizing vulnerable households, the elderly, and families with children living below the poverty line. The emergency aid and relief program also works to help partner institutions repair damages or provide support for other emergency needs caused by war and crisis.

Emergency Relief in Gaza after the War

In 2021, PMP continued to support the psychosocial program at the three mother-and-child clinics operated by the Near East Council of Churches (NECC) in the Gaza Strip. The program provided free psychosocial counseling for children and their parents immediately after the war on Gaza in 2021. Emergency funds also supported a program at NECC's three clinics that addressed chronic malnourishment and stunted growth among children — the result of extreme poverty in Gaza — which stood at 33 percent and 13 percent among Gaza's child population.

A similar program through AISHA - Association for Women and Child Protection, served the residents of Al-Shate Refugee Camp. Psychosocial activities were organized at the camp's Brotherhood Park, which was installed by PMP in 2002, helping to relieve child anxiety and stress and provide practical tools for parents on how to support their children's mental health.

Always in support of children's overall well-being, PMP funded the restoration of the Rosary Sisters School, namely the kindergarten classroom and the school's foundation, after heavy bombardment of the adjacent street which slightly shifted the building's foundation. The school's protection wall had to be demolished and rebuilt as well. Other rehabilitation work was conducted that restored 38 classrooms, 1 laboratory, 10 bathrooms and 4 corridors within the school. The generous grants provided by CNEWA Canada, Children's Relief Bethlehem and the Diocese of Stockholm, allowed all elementary and secondary classes to

resume at the start of the 2021-2022 academic year.

The YMCA's youth program, including sports and scouting, resumed after war damages to the building, playground and solar panels were repaired. This effort was made possible through PMP, with funding from other nonprofit partners, including Embrace the Middle East and Children's Relief Bethlehem. The rapid response allowed 20 YMCA employees to return to work immediately which helped the administration plan and implement a complete rehabilitation project of the damages as well as conduct activities, benefiting 2,200 YMCA members (including children, youth, men, and women).



Creche – Bethlehem Emergency Heating Fuel Daughters of Charity - Sisters of St. Vincent de Paul

Due to the COVID-19 pandemic, donations to the Creche dropped by 50% and had a significant impact on the Creche's operations. The local community was a significant contributor towards the Creche – including Bethlehem hotels restaurants and souvenir shops. Many of these institutions shut down during the pandemic and had dismissed all their staff to save costs. Before COVID-19 pandemic, each day, the Creche used to host at least one pilgrimage group that used to donate to the orphanage. Some international donors stopped helping the Creche altogether, due to the fact that collections and contributions abroad have significantly decreased.

Despite these financial setbacks, the Sisters have not dismissed any of its employees during the pandemic, in order to not jeopardize the care provided to the children. However, the running expenses were increasingly becoming a burden, and the Sisters were in a desperate need as the 2021 winter approached. Thanks to the generous contribution from Children's Relief Bethlehem in 2021, the Daughters of Charity were able to procure a total of 18,500 liters of heating fuel for the orphanage's heating system for the 2021 winter. CRB supported a total of 45 beneficiaries: babies and children of the Creche and 30 caregivers/staff, 65 children from the local community and 3 Sisters, all of whom live, are cared for or work at the Creche.



Studies and Surveys

Conference on Christian Palestine

PMP in cooperation with Sabeel Ecumenical Liberation Theology Center and the Al-Quds Research and Study Center, organized a one-day conference on the history of Christians in Palestine.

The conference presented 12 papers prepared by local researchers and academics on the life and mission of Jesus Christ, the establishment of the Church in Palestine and the growth of the Christian community as well as the Christian-Muslim relationship from the mid-7th century until the fall of the Byzantine empire in the 15th century. PMP funded the project with the hope that the information can be used in religious study classes in local schools and universities or for Palestinian Christian parents who wish to help their children discover their Christian roots, which date back to over 2,000 years.



Economic Survey on East Jerusalem & Church Related NGOs

East Jerusalem is identified as one of the poorest areas in the Palestinian territories. Local schools are one of the few support systems available for disadvantaged children and youth, yet these very institutions lack the funds to provide career guidance counseling programs for students. Students at the end of high school are unaware and unprepared, relying on the advice of parents, peers, or other community members for career guidance. Youth are at-risk at making poor life choices and are more likely to have lower matriculation exams results, drop-out of high school or university, have lower wage jobs or become unemployed.

The PMP has conducted several studies in the past two years. The results of the study, "Analysis of the Israeli Labor Market" by economist, Hani Tahhan and funded by PMP, were released on September 3, 2021. The study identified developing industries in Israel and emerging job professions, revealed the challenges facing Palestinian high school and university students and provided recommendations on how youth, parents, schools, and youth community centers can take a proactive approach to help young people make better career and life choices. The study will be used to determine future PMP programs to better support the youth sector in East Jerusalem and Israel.



Enhance and improve access to better public facilities

Many community-based organizations and Church institutions in Israel and Palestine face difficulties such as severe financial constraints and fundraising capabilities, which further limits the ability to provide and sustain services in the long-term. Additionally, these institutions provide quality healthcare programs to people of all nationalities, ethnicities, and religious groups without discrimination.

With the support of donors, PMP provided financial support in 2021, that has enhanced and improved the facilities and services, despite two years of COVID-19 restrictions which have been imposed on the local population in Israel and Palestine. Grants enabled these institutions to procure needed equipment and conduct rehabilitation work which continues to improve services and support for beneficiaries.

It is part of PMP's strategy to continue to support the work of Church organizations and institutions whose quality services are with Christian values and act as the "tools of evangelization". PMP has continued partnership with several Christian institutions that care for the marginalized and poor and for those who come from broken homes, have minimal to no access to health, education and social care and are in dire need of continued support.

Rehabilitations at the Terra Santa Scout Center, Bethlehem



Installing fan coils at the Holy Family Hospital, Bethlehem





New Computer lab for Bethlehem University



New science lab for College des Freres, Bethlehem



Before



After



Photovoltaic solar pannels for the Marie Doty Park, Bethlehem



Photovoltaic solar pannels for the Marie Doty Park, Bethlehem



Zoom zone at SIWAR for Culture & Arts, Jerusalem to provide students internet access during the pandemic

Case Study – Franciscan Boys Home Bethlehem, West Bank

Most Rev. Fr. Francesco Patton, Custos of the Holy Land, presided the Eucharist at the Franciscan Boys Home in Bethlehem, celebrating 14 years from the establishment of the Home catering for children from troubled homes. A couple of youth shared their experiences and how the Home, the Franciscans, and the team at the Home, helped them turn their fate from children doing poorly at school into successful self-confident graduates. Last year, PMP supported the Home in rehabilitating the kitchen & the laundry room which supports the Home's operations and care for the boys, thanks to a generous donation by the Dutch Lieutenancy.



*New kitchen & laundry at the
Franciscan Boys Home*



Case Study

– Hydroponic System Installations at CBOs Home Notre Dame Des Douleurs, Abu Dis

PMP implemented a small-scale hydroponic units' system installation program at institutions and schools throughout East Jerusalem and the West Bank in collaboration with local partners. The hydroponic systems that provide pesticide free, organic food for beneficiaries. The PMP installed a hydroponic system at the Home Notre Dame des Douleurs with the generous funds from the Knights of Holland, for the elderly residential center in Abu Dis in East Jerusalem. The elderly home provides 24-hour residence care for 45 residents and serves as the only nursing home in the immediate area (behind the Separation Wall).

Providing the Hydroponic System for the Elderly Center helped the Home produce organic, home-grown vegetables and fruits year round. The system requires regular care and also serves as a small green space for elderly residents and staff. Elderly residents reduce stress and anxiety by tending to the garden on a daily basis, growing tomatoes, cucumbers, sweet pepper, and corn.



Case Study

– The Infant Welfare Center, Jerusalem Greek Melkite Catholic Archbishopric

The Infant Welfare Center was established in Jerusalem after the war in 1948 under the Greek Catholic Church to provide basic healthcare for Palestinian refugees. Over the past 74 years, the centers' services have expanded as the center recognized the need to fill the service gap in the Old City of Jerusalem and periphery neighborhoods. It not only provides preventive and curative health care for Palestinian mothers and their children but also opened its own kindergarten for children of working mothers, a student scholarship fund that provides financial aid for poor students and a successful remedial service program for middle and high school students who are struggling in school.

In 2021, the Infant Welfare Center began the slow process of re-opening after a year and a half of closure. As part of this process, the center re-evaluated the needs of the community. The center organized a summer program for 41 children, aged 3 - 8 years old as part of its mental health strategy for children during the summer months. At the time of reopening, it was the only center in the Old City which offered child-centered mental health activities. It also organized a mental health program for parents/adults who were struggling to cope with anxiety and stress from the pandemic and prevailing socioeconomic situation that affects households. Parents were introduced to laughter therapy, using different methods that encourage positive thinking and effective and manageable ways on how to deal with their emotional problems. The center also continued its remedial service program for students who exhibited difficulties with school subjects such as Arabic language, Math and Science. These lessons were provided for a period of three months, benefiting 25 students from ages 14 to 17 years old.



Case Study

– Terra Santa Parish Center Beit Hanina, East Jerusalem

Terra Santa Parish Center (TSPC) was founded in 1969 in Beit Hanina; it provides religious, social, cultural, and sports activities year-round. The center remains the largest Christian center in the area and its programs serve 5,000 Christians, their families, and the elderly from all denominations. The TSPC went through difficult and challenging conditions during the past couple of years. For families and parents to attend parish programs, recreational, social and sports activities and events, the center did not have an indoor or outdoor play area at all to serve children, aged 3-12 years old. PMP provided donor funds from the Representative Office of Germany to establish a new, safe playground and play area which helped bolster adult and family attendance in organized activities by the parish on a weekly basis; in addition to the center's workout room and gym (for adults), a small café for food and drinks (located near the playground), organized sports activities (basketball and soccer training and tournaments) for school-aged children after-school, annual summer camp during the summer months in addition to annual cultural and social events.



Pastoral Program

PMP's pastoral program aims to strengthen the Christian presence in the Holy Land, the land of Jesus and where the Christian message of peace and justice is present. PMP and its implementing partners are convinced that providing specific programs aiming at educating youth in their faith, investing in programs that enhance their sense of belonging to the land of Jesus and improving relationships with their Muslim peers are key to achieving this goal.

Young Palestinians today have lost a sense of belonging and purpose to remain in their homeland. PMP believes that targeting the young generation (young Christian youth below the age of 25 years old) in collaboration with Christian adult leaders like schoolteachers, catechism teachers (through school religion programs) in addition to parish leaders (through local parishes), can create a supportive platform which cultivates a deeper connection and 'sense of belonging'. In addition, the program foresees minor needs for equipment, furniture or maintenance work aimed at improving the pastoral programs.



Caroler contest, Bethlehem



*Bible Summer Camp,
Jerusalem*



*Christmas event, Terra Santa
School, Jerusalem*

Case Study – Summer Camp activities benefit Scouts Groups

PMP extended a helping hand towards summer camp programs of 6 scout troops from East Jerusalem and Bethlehem, during the 2021 summer. The camps culminated year-long scout activities and programs which promote scout values of leadership and cooperation among some 1,100 children and youth. Funds covered activities included outings, lectures, and other teamwork activities. The scout camps were held after two years pause due to the spread of the Covid-19.



Case Study

– Support Sabeel Bible Study Program during COVID – 19 pandemic

In 2020, the COVID-19 pandemic that hit Israel and Palestine significantly impacted the local Christian community. With strict government regulations in place that prevented indoor public gatherings, many aspects of Christian life were halted. For Sabeel - an ecumenical grassroots theology organization, the ban on public gatherings also impacted its Bible study group sessions and training programs and other aspects of its work for the local Christian community. The generous contribution from CNEWA Canada towards Sabeel's youth Bible study groups in 2020 - 2021, covered the costs of youth training workshops, discussions, and sessions on the Bible which were held online and in-person as a result of the pandemic. These activities created and supported Bible study for young Palestinians, encouraging them to build their Christian faith and work to become leaders within their own communities.

The 2020-2021 Bible Study Program benefited over 700 participants who were able to open, read, and understand the Bible and relate their faith to their daily life, thanks to the materials and online/in-person Bible study sessions. Additionally, 38 facilitators/leaders lead and facilitated meetings within their communities and 107 easy-to-use Bible study materials were created and used for online/in-person discussions, connecting young people with their faith.

Reading the Bible & visiting the land of the Bible



Subsidized Institutions

PMP maintains its commitment to support three public institutions in the health and education sectors: Near East Council of Churches Mother and Child Clinics (NECC) in Gaza, Pope Paul VI Ephpheta Institute for the Deaf in Bethlehem, and the Pontifical Mission Educational and Cultural Center (PMECC), also in Bethlehem.

Paul VI Ephpheta Institute, Bethlehem

In the Palestinian territories, it is estimated that 3% of the population have hearing impairments.

Particularly, in some isolated villages, the percentage rises to 15% among residents, thus ranking among the highest in the world. This can almost entirely be attributed to genetic inheritance, rather than trauma or infection during childhood. In the Palestinian territories, about 40% of marriages are cross cousin marriages, which increases the chance that their children will have a genetic disorder.

Till today, hearing-impaired children in Palestine do not receive the proper care and assistance services they require, as there are very few institutions that exist and there is no government support system. Deaf children and their families must find alternative educational and support services, which can be both costly and difficult, for the average Palestinian family. Ephpheta is operated by the Sisters of Saint Dorothy and is the only school that allows students to continue their formal education to the 12th grade. Ephpheta staff are comprised of 32 speech therapists, audiologists, social workers, and teachers who are trained in the field of oral deaf education and auditory-verbal therapy. The school serves approximately 180 deaf students with a valuable education for life.

CNEWA's annual subsidy towards the Ephpheta Institute supports the operations of the school, specifically all teacher's salaries in the preschool and early rehabilitation program, kindergarten, primary and lower secondary schooling, individualized speech therapy, social welfare assistance program and parental group training.



Pontifical Mission Educational and Cultural Center

The PMECC was established in 1970 as a small library in Bethlehem and over the years has evolved into a combined library and community center. The Teresian Sisters operate the PMECC with the support of its team, which offers an array of afterschool programs, reading and skill-building activities and an annual summer camp program. All activities at the PMECC use a 'hands-on learning approach' and tools in its programs which help school-aged children and youth to learn better. The center is the only library in Bethlehem Governorate that targets school-aged children, adolescents, and families. These activities cater the needs of both Christians and Muslims, young and adult alike which foster social interaction and build relationships as they learn to do things together in an atmosphere of trust, respect, and responsibility, as well as appreciation and acceptance of what is different and unique.

CNEWA's annual subsidy towards the PMECC contributes towards the center's operating costs. This includes facility operations, staff salaries, subscriptions, program support, etc. The PMECC conducts regular child activities and programs that are free for children and their families. This effort will ensure that residents of Bethlehem and other areas of Hebron as well as other areas, have access to academic resources and educational activities that promote reading and knowledge which contribute towards the health and wellbeing of children.



NECC Mother and Child Clinics

Unemployment and poverty have increased food insecurity amongst the poor and vulnerable in the Gaza Strip. Malnutrition is also a chronic health concern in Gaza especially among babies and children. Access to safe drinking water is a health concern as just one in ten people in Gaza have direct access to safe water.

The absence of a national healthcare system in the Gaza Strip puts 2 million Gaza residents at risk for short and long-term health problems.

The Near East Council of Churches (NECC) Mother and Child Clinics is part of a network of Gaza's non-government organizations and medical institutions that provide free healthcare and wellbeing programs; NECC specifically targets mothers and their children (especially those that are non-refugee and ineligible for medical insurance by the UNWRA) and are often denied access to healthcare due to their non-refugee status. Medical prevention and care at NECC include prenatal and antenatal care are provided annually, including home follow-up visits, dental and access to educational workshops, which require donor funding annually. CNEWA provides an annual subsidy to support the work and operations of the clinics. PMP also

raises funds from donors to support NECC's malnourishment and psychosocial programs which provide access to vital medical treatment and preventative healthcare as well as mental health support for both children and adults.



Donors & Benefactors

PMP is grateful to CNEWA, CNEWA Canada and other partner donors and benefactors that fund our work in the Holy Land. Without your generosity and support, our work would not be possible. Thank you!

- Diocese of Stockholm
- Children's Relief Bethlehem
- Embrace the Middle East
- Friends of the Holy Land
- Grand Magistero
- Kindermissionswerk
- Knights of the Holy Sepulchre, Holland
- Manos Unidas
- Misereor
- Porticus
- Representative Office of the Federal Republic of Germany
- Swiss Holy Land Foundation



Pontifical Mission Director and projects manager visit with His Beatitude, Theophilos III, Patriarch of Jerusalem



The Director & Staff Visit with the Latin Patriarch of Jerusalem, His Beatitude, Arch. Pierbattista Pizzaballa

Since

1949

*Final ceremony of the
Psychosocial program for children in Gaza
Brotherhood Park, Shate' Refugee Camp*

CNEWA-Pontifical Mission,
P.O. Box 14313, Jerusalem
Tel: (+972-2) 627 2126
Fax: (+972-2) 627 3777
Email: pmp@pmp.co.il
PontificalMissionJerusalem

